

# 7500 AND 7520 DEEP-REACH<sup>®</sup> TRUCK

SPECIFICATION SHEET



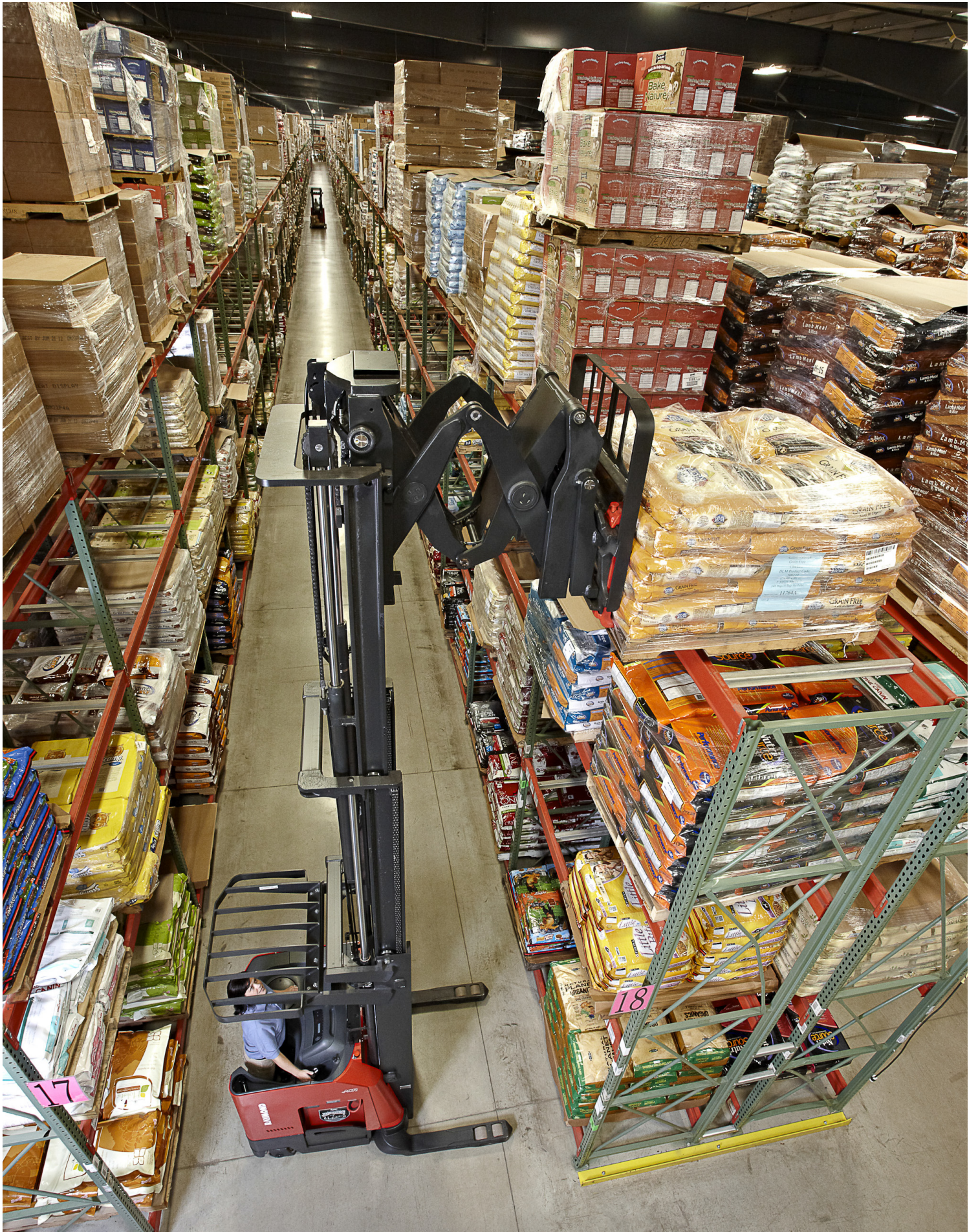
**RAYMOND**

For International Use Only

# INNOVATION. DESIGN. PERFORMANCE.

The 7000 Series Reach-Fork design starts with an innovative suspension system that creates superior load stability at greater heights while providing operators with a smooth ride. The ACR System™ delivers quick acceleration, smoother directional changes, longer battery shift life and an AC Lift Motor that enables more efficient use of power – lowering overall energy costs. Intuitive ergonomics make them easy to learn to drive, offering clear vision, precise control, and smooth handling for the ultimate in operator comfort and productivity.

Decreased downtime with the utmost reliability and ease of service – and most important – a lower total cost of ownership, makes Raymond Reach-Fork® trucks the bestselling reach trucks in North America. And, we offer the most comprehensive line of customer based Reach-Fork truck solutions in the market – with more than 200 configurations available and Deep-Reach® capacities up to 3,200 pounds.



For International Use Only

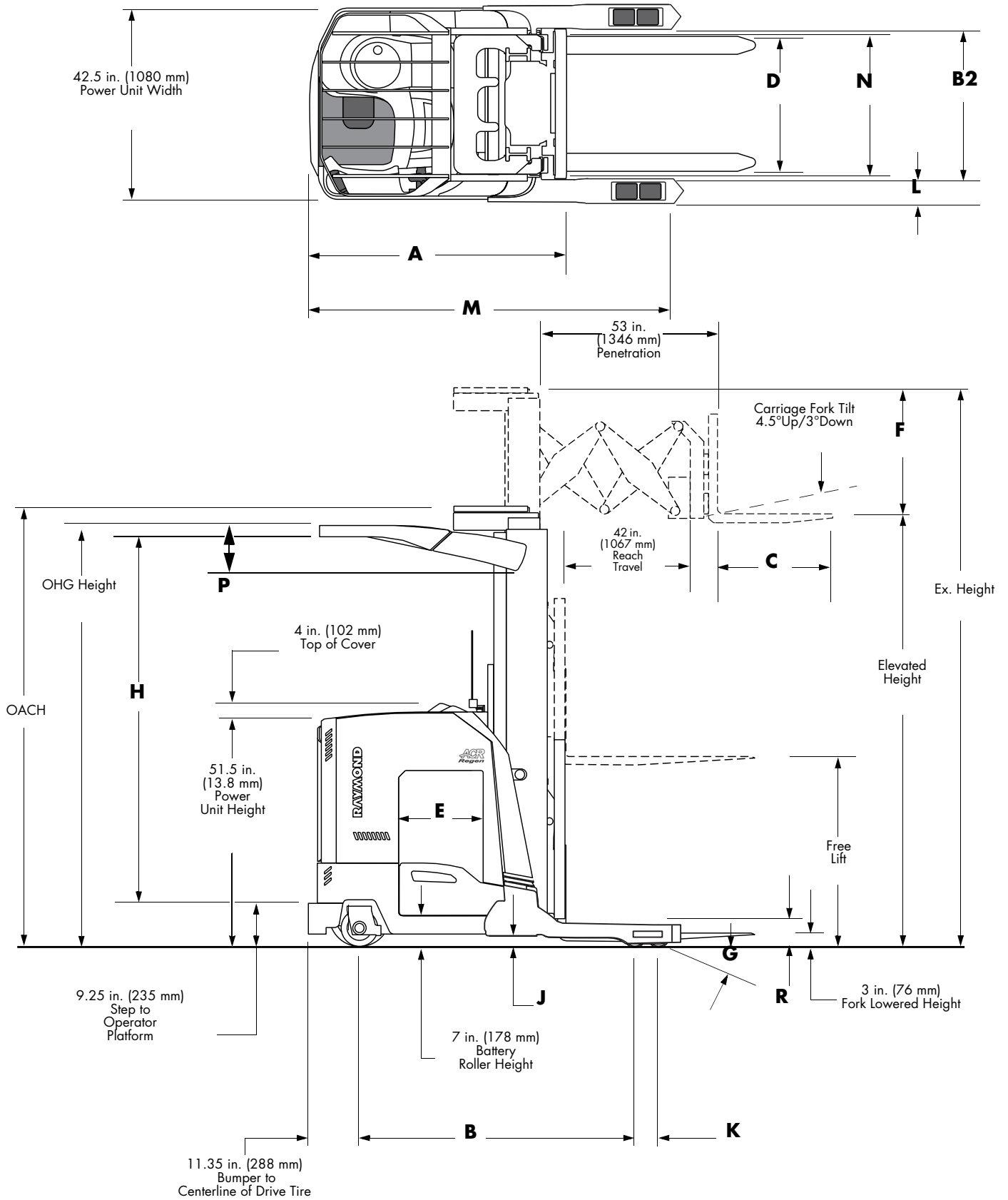
# TRUCK SPECIFICATIONS

DIMENSIONS AND GENERAL INFORMATION				
Model			7500-DR32TT w/ Sideshift (El. Ht. to 372 in.) [5]	7520-DR32TT w/ Sideshift (El. Ht. to 444 in.) [4][6]
<b>A</b>	Truck Head Length w/ Sideshift	in. (mm)	62.0 [3] (1575)	66.8 [4] (1697)
<b>B</b>	Truck Wheelbase	in. (mm)	61.6 [3] (1565)	65.1 [4] (1654)
<b>B2</b>	Baseleg Opening (BLO)	in. (mm)	[8]	[8]
<b>C</b>	Forks, ITA Type (Std.) (L x W x T)	in. (mm)	42 x 4 x 1.5 (1067 x 102 x 38)	42 x 4 x 1.5 (1067 x 102 x 38)
<b>C</b>	Forks, Lengths (Opt.)	in. (mm)	30, 36, 48 (762, 914, 1219)	30, 36, 48 (762, 914, 1219)
<b>D</b>	Fork Adjustment	in. (mm)	15 – 30 (381 – 762)	15 – 30 (381 – 762)
<b>E</b>	Battery Compartment Max. Usable Width [2]	in. (mm)	16.12 [3] (409)	18.12 [4] (460)
<b>F</b>	Fixed Carriage Height (Without Load Backrest)	in. (mm)	38 (965)	38 (965)
<b>G</b>	Grade Clearance	%	13	10
<b>H</b>	Operator Compartment Height	in. (mm)	OHG height – 11.25 (286)	OHG height – 11.25 (286)
<b>J</b>	Truck Underclearance	in. (mm)	2 (51)	2 (51)
<b>K</b>	CL to CL Load Wheel	in. (mm)	5.25 (133)	5.25 (133)
<b>L</b>	Baseleg Width [7]	in. (mm)	5.25 (133)	5.25 (133)
<b>M</b>	Truck Length	in. (mm)	83.3 [3] (2116)	86.8 [4] (2205)
<b>N</b>	Truck Mast OAW [1]	in. (mm)	31 (787)	35.5 (902)
<b>P</b>	Overhead Guard Thickness	in. (mm)	10.02 (254)	13.18 (335)
<b>Q</b>	Load Backrest Height	in. (mm)	36 (914)	36 (914)
<b>R</b>	Baseleg Height	in. (mm)	5 (127)	5 (127)
Model			7500-DR32TT w/ Sideshift (El. Ht. to 372 in.)	7520-DR32TT w/ Sideshift (El. Ht. to 444 in.) [6]
Power Unit			36 Volt, Single Drive	36 Volt, Single Drive
Max. Cap. @ 24 in. (600 mm) Load Center		lb. (kg)	3,200 (1451)	3,200 (1451)
Operator Compartment			Stand-up	Stand-up
Drive Tire, Soft Poly (Quantity of 1) Dia. x W		in. (mm)	13.5 x 6 (343 x 152)	13.5 x 6 (343 x 152)
Steered Idler Tire, Hard Poly (Quantity of 1) Dia. x W		in. (mm)	8 x 4 (203 x 102)	8 x 4 (203 x 102)
Load Wheels, Hard Poly (Quantity of 4) Dia. x W		in. (mm)	5 x 3.62 (127 x 92)	5 x 3.62 (127 x 92)
Gradability		%	7	5
Turning Radius		in. (mm)	75.6 [3][9] (1920)	79.6 [3][9] (2022)
Mast Type			3-stage	3-stage
Maximum Elevated Mast Height		in. (mm)	372 (9449)	444 (11278)
<b>NOTES:</b>				
[1] Add 3.0 in. (76 mm) at OHG side plates.				
[2] Additional clearance available, 0.25 in. (6.4 mm) with minor alteration.				
[3] Add 2 in. (51 mm) for 18.12 in. (460 mm) B.C. and 5 in. (127 mm) for 21.12 in. (536 mm) B.C.				
[4] Add 3 in. (76 mm) for 21.12 in. (536 mm) B.C.				
[5] For lift heights from 331 in. (8407 mm) to 372 in. (9449 mm): Requires 18.12 in. (460 mm) B.C. or 21.12 in. (536 mm) B.C. AC/AC configuration.				
[6] For lift heights greater than 400 in. (10160 mm): Requires 21.12 in. (536 mm) B.C.				
[7] The baseleg overall width is the inside dimension (BLO) plus 10.5 in. (266.7 mm). You may need to reduce the inside dimension 1 in. (25.4 mm) to accommodate existing applications.				
[8] Available baseleg openings (BLO) are 33, 34, 35, 36, 37, 38, 39, 40, 41, 42, 43, 44, 49, 50, 51, and 52 inches. For Elevated Heights at 331 in. (8407 mm) or greater, 37 in (940 mm) is minimum BLO.				
[9] Sideshift is included in dimensions.				



For International Use Only

# DIAGRAM



For International Use Only

# TRUCK SPECIFICATIONS

MAST SPECIFICATIONS						
Model	OACH [1]	Elevated Ht. [2][7]	Extended Ht. [2]	Full Free Lift	OHG Height [3]	Truck Weight without Battery [8]
	in. (mm)	in. (mm)	in. (mm)	in. (mm)	in. (mm)	lb. (kg)
<b>7500-DR32TT</b> <b>(AC Lift, Electronic Power Steering)</b> <b>(16.12 in. B.C.) [4]</b> <b>(El. Ht. to 330 in.)</b>	89 (2260)	189 (4800)	227 (5766)	38 (965)	87.4 (2220)	5,949 (2698)
	95 (2413)	207 (5258)	245 (6223)	50 (1270)	93.4 (2372)	6,079 (2757)
	100 (2540)	216 (5486)	254 (6452)	55 (1397)	93.4 (2372)	6,161 (2795)
	107 (2718)	237 (6020)	275 (6985)	62 (1579)	93.4 (2372)	6,420 (2912)
	114 (2896)	252 (6401)	290 (7366)	69 (1753)	93.4 (2372)	6,534 (2964)
	118 (2997)	264 (6706)	302 (7671)	73 (1854)	93.4 (2372)	6,599 (2993)
	122 (3099)	276 (7010)	314 (7976)	77 (1956)	93.4 (2372)	6,664 (3023)
	128 (3251)	288 (7315)	326 (8280)	83 (2108)	93.4 (2372)	6,762 (3067)
	135 (3429)	302 (7671)	340 (8636)	90 (2286)	93.4 (2372)	6,876 (3119)
	141 (3581)	315 (8001)	353 (8966)	96 (2438)	93.4 (2372)	6,974 (3163)
	142 (3607)	321 (8153)	359 (9119)	97 (2464)	93.4 (2372)	7,007 (3178)
	146 (3708)	330 (8382)	368 (9347)	101 (2565)	93.4 (2372)	7,093 (3217)
<b>7500-DR32TT</b> <b>(AC Lift, Electronic Power Steering)</b> <b>(18.12 in. B.C.) [5]</b> <b>(El. Ht. to 330 in.)</b>	89 (2260)	189 (4800)	227 (5766)	38 (965)	87.4 (2220)	5,949 (2698)
	95 (2413)	207 (5258)	245 (6223)	50 (1270)	93.4 (2372)	6,079 (2757)
	100 (2540)	216 (5486)	254 (6452)	55 (1397)	93.4 (2372)	6,161 (2795)
	107 (2718)	237 (6020)	275 (6985)	62 (1579)	93.4 (2372)	6,420 (2912)
	114 (2896)	252 (6401)	290 (7366)	69 (1753)	93.4 (2372)	6,534 (2964)
	118 (2997)	264 (6706)	302 (7671)	73 (1854)	93.4 (2372)	6,599 (2993)
	122 (3099)	276 (7010)	314 (7976)	77 (1956)	93.4 (2372)	6,664 (3023)
	128 (3251)	288 (7315)	326 (8280)	83 (2108)	93.4 (2372)	6,762 (3067)
	135 (3429)	302 (7671)	340 (8636)	90 (2286)	93.4 (2372)	6,876 (3119)
	141 (3581)	315 (8001)	353 (8966)	96 (2438)	93.4 (2372)	6,974 (3163)
	142 (3607)	321 (8153)	359 (9119)	97 (2464)	93.4 (2372)	7,007 (3178)
	146 (3708)	330 (8382)	368 (9347)	101 (2565)	93.4 (2372)	7,093 (3217)
<b>7500-DR32TT</b> <b>(AC Lift, Electronic Power Steering)</b> <b>(21.12 in. B.C.) [6]</b> <b>(El. Ht. to 330 in.)</b>	89 (2260)	189 (4800)	227 (5766)	38 (965)	87.4 (2220)	5,949 (2698)
	95 (2413)	207 (5258)	245 (6223)	50 (1270)	93.4 (2372)	6,079 (2757)
	100 (2540)	216 (5486)	254 (6452)	55 (1397)	93.4 (2372)	6,161 (2795)
	107 (2718)	237 (6020)	275 (6985)	62 (1579)	93.4 (2372)	6,420 (2912)
	114 (2896)	252 (6401)	290 (7366)	69 (1753)	93.4 (2372)	6,534 (2964)
	118 (2997)	264 (6706)	302 (7671)	73 (1854)	93.4 (2372)	6,599 (2993)
	122 (3099)	276 (7010)	314 (7976)	77 (1956)	93.4 (2372)	6,664 (3023)
	128 (3251)	288 (7315)	326 (8280)	83 (2108)	93.4 (2372)	6,762 (3067)
	135 (3429)	302 (7671)	340 (8636)	90 (2286)	93.4 (2372)	6,876 (3119)
	141 (3581)	315 (8001)	353 (8966)	96 (2438)	93.4 (2372)	6,974 (3163)
	142 (3607)	321 (8153)	359 (9119)	97 (2464)	93.4 (2372)	7,007 (3178)
	146 (3708)	330 (8382)	368 (9347)	101 (2565)	93.4 (2372)	7,093 (3217)

**Notes:**

[1] Tolerance = +/- 0.75 in. (+/- 19 mm).  
 [2] Tolerance = +2.5/-0.5 in. (+64/-13 mm).  
 [3] Tolerance = +/- 1 in. (+/- 25.4 mm).  
 [4] Usable size is 16.12 in. (409 mm); outside dimension is 16.5 in. (419 mm).  
 [5] Usable size is 18.12 in. (460 mm), outside dimension is 18.5 in. (470 mm).  
 [6] Usable size is 21.12 in. (536 mm), outside dimension is 21.5 in. (546 mm).  
 [7] Recommended lift-off height is 10 in. (254 mm) higher than top beam height.  
 [8] Shipping weight is 10% greater for crated trucks.

**Important Information:**  
 Full free lifts shown are for basic reach carriage with power tilt. Decrease values when non-standard load backrest or remote station are used.

## MAST SPECIFICATIONS

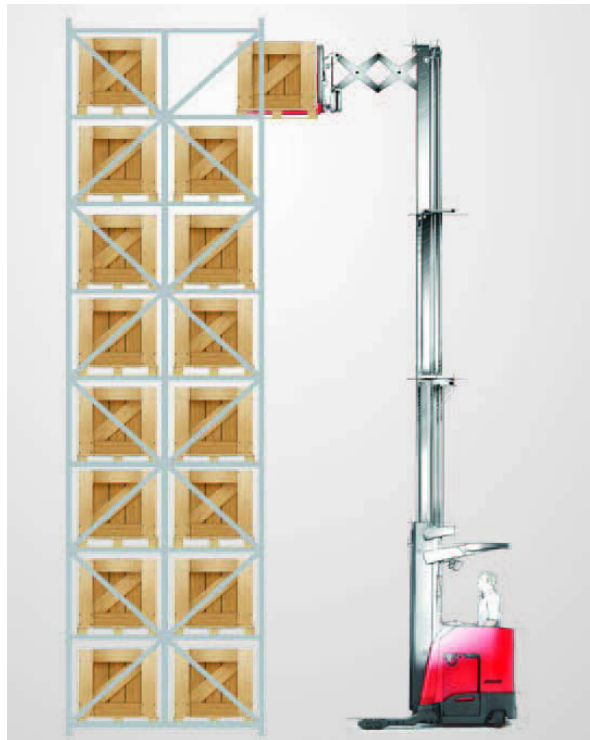
Model	OACH [1]	Elevated Ht. [2][7]	Extended Ht. [2]	Full Free Lift	OHG Height [3]	Truck Weight without Battery [8]
	in. (mm)	in. (mm)	in. (mm)	in. (mm)	in. (mm)	lb. (kg)
<b>7500-DR32TT</b> (AC Lift, Electronic Power Steering) (18.12 in. B.C.) [5] (El. Ht. 331 in. – 372 in.)	148 (3759)	336 (8534)	374 (9500)	103 (2616)	93.4 (2372)	7,170 (3252)
	152 (3861)	348 (8839)	386 (9804)	107 (2718)	93.4 (2372)	7,286 (3305)
	156 (3962)	360 (9144)	398 (10109)	111 (2819)	93.4 (2372)	7,402 (3357)
	160 (4064)	372 (9449)	410 (10414)	115 (2921)	93.4 (2372)	7,518 (3410)
<b>7500-DR32TT</b> (AC Lift, Electronic Power Steering) (21.12 in. B.C.) [6] (El. Ht. 331 in. – 372 in.)	148 (3759)	336 (8534)	374 (9500)	103 (2616)	93.4 (2372)	7,203 (3267)
	152 (3861)	348 (8839)	386 (9804)	107 (2718)	93.4 (2372)	7,318 (3319)
	156 (3962)	360 (9144)	398 (10109)	111 (2819)	93.4 (2372)	7,434 (3372)
	160 (4064)	372 (9449)	410 (10414)	115 (2921)	93.4 (2372)	7,550 (3425)
<b>7520-DR32TT</b> (AC Lift, Electronic Power Steering) (18.12 in. B.C.) [5] (El. Ht. 346 in. – 400 in.)	149 (3785)	346 (8788)	384 (9754)	104 (2642)	93.4 (2372)	8520 (3865)
	157 (3988)	370 (9398)	408 (10363)	112 (2845)	93.4 (2372)	8550 (3878)
	159 (4039)	376 (9550)	414 (10516)	114 (2896)	93.4 (2372)	8570 (3887)
	167 (4242)	400 (10160)	438 (11125)	122 (3099)	93.4 (2372)	8620 (3910)
<b>7520-DR32TT</b> (AC Lift, Electronic Power Steering) (21.12 in. B.C.) [6] (El. Ht. 346 in. – 444 in.)	149 (3785)	346 (8788)	384 (9754)	104 (2642)	93.4 (2372)	8520 (3865)
	157 (3988)	370 (9398)	408 (10363)	112 (2845)	93.4 (2372)	8550 (3878)
	159 (4039)	376 (9550)	414 (10516)	114 (2896)	93.4 (2372)	8570 (3887)
	167 (4242)	400 (10160)	438 (11125)	122 (3099)	93.4 (2372)	8620 (3910)
	174 (4420)	421 (10693)	459 (11659)	129 (3277)	93.4 (2372)	8670 (3933)
	184 (4674)	444 (11278)	482 (12243)	139 (3531)	93.4 (2372)	8740 (3964)

**Notes:**

- [1] Tolerance = +/- 0.75 in. (+/- 19 mm).
- [2] Tolerance = +2.5/-0.5 in. (+64/-13 mm).
- [3] Tolerance = +/- 1 in. (+/- 25.4 mm).
- [4] Usable size is 16.12 in. (409 mm); outside dimension is 16.5 in. (419 mm).
- [5] Usable size is 18.12 in. (460 mm), outside dimension is 18.5 in. (470 mm).
- [6] Usable size is 21.12 in. (536 mm), outside dimension is 21.5 in. (546 mm).
- [7] Recommended lift-off height is 10 in. (254 mm) higher than top beam height.
- [8] Shipping weight is 10% greater for crated trucks.

**Important Information:**

Full free lifts shown are for basic reach carriage with power tilt. Decrease values when non-standard load backrest or remote station are used.



For International Use Only



For International Use Only



# TRUCK SPECIFICATIONS

PERFORMANCE SPECIFICATIONS							
MODEL		7500-DR32TT (AC/AC) (El. Ht. to 330 in.)		7500-DR32TT (AC/AC) (El. Ht. to 372 in.)		7520-DR32TT (AC/AC) [4] (El. Ht. to 444 in.)	
Battery Compartment	in. (mm)	16.12 (409)		18.12 or 21.12 (460 or 536)		18.12 or 21.12 (460 or 536)	
<b>Main Controls</b>				<b>Standard</b>	<b>With Regen</b>	<b>With Regen</b>	
Lift Speed Unloaded [1]	fpm (m/s)	150 (0.76)		150 (0.76)	160 (0.81)	160 (0.81)	
Lift Speed w/Full Load [1]	fpm (m/s)	110 (0.56)		90 (0.46)	90 (0.46)	110 (0.56)	
Lift Speed w/3,000 lb. Load [1]	fpm (m/s)	95 (0.48)		95 (0.48)	95 (0.48)	115 (0.58)	
Lift Speed w/2,500 lb. Load [1]	fpm (m/s)	105 (0.53)		105 (0.53)	105 (0.53)	120 (0.61)	
Lift Speed w/2,000 lb. Load [1]	fpm (m/s)	115 (0.58)		115 (0.58)	115 (0.58)	130 (0.66)	
Lift Speed w/1,000 lb. Load [1]	fpm (m/s)	135 (0.68)		135 (0.68)	135 (0.68)	145 (0.74)	
		<b>Unloaded</b>	<b>Loaded</b>	<b>Unloaded</b>	<b>Loaded</b>	<b>Unloaded</b>	<b>Loaded</b>
Lower Speed [1]	fpm (m/s)	110 (0.56)	110 (0.56)	110 (0.56)	110 (0.56)	110 (0.56)	110 (0.56)
Travel Speed [1]	mph (km/h)	8.0 (12.9)	7.5 (12.1)	8.0 (12.9)	7.5 (12.1)	8.0 (12.1)	7.0 [2][3] (11.2)
Travel Current	amp	140	190	140	190	TBA	TBA
<b>Auxiliary Controls</b>							
Reach Time	sec	3.5	3.6	3.5	3.6	3.6	3.6
Tilt Time	sec	1.9	2.2	1.9	2.2	2.0	2.7
<b>Notes:</b>							
[1] Maximum speed attainable, after break-in period, varies with truck weight, rolling resistance, mast height, options and battery condition.							
[2] 7.5 mph (12.1 km/h) with up to 1500 lb. (680 kg) load.							
[3] With load greater than 1500 lb. (680 kg) in either direction. Model 7520 maximum shown; may be lower based on vehicle weight.							
[4] For lift heights greater than 400 in. (10160 mm): Requires 21.12 in. (536) B.C.							

BATTERY SPECIFICATIONS					
MODEL		7500-DR32TT (El. Ht. to 330 in.)	7500-DR32TT (El. Ht. to 372 in.)	7520-DR32TT (El. Ht. to 400 in.)	7520-DR32TT (El. Ht. to 444 in.)
Ampere-hours, Max.		1240	1240	1240	1240
Battery Connector Type		SB-350	SB-350	SB-350	SB-350
Battery Connector Color		Gray	Gray	Gray	Gray
Lead Location		B	B	B	B
Lead Length	in. (mm)	15 (381)	15 (381)	15 (381)	15 (381)
Max. Usable Comp. Size (L x W x H) [1][2]	in. (mm)	38.62 x 16.12 x 31 (981 x 409 x 787) [3][4][5]	38.62 x 18.12 x 31 (981 x 460 x 787) [3][5]	38.62 x 18.12 x 31 (981 x 460 x 787) [5]	38.62 x 21.12 x 31 (981 x 536 x 787) [5]
Optional Battery Comp. Max. Usable Comp Size (L x W x H) [1][2]	in. (mm)	38.62 x 18.12 x 31 (981 x 460 x 787) [3][4][5]	38.62 x 21.12 x 31 (981 x 536 x 787) [4][5]	38.62 x 21.12 x 31 (981 x 536 x 787) [4][5]	—
Optional Battery Comp. Max. Usable Comp Size (L x W x H) [1][2]	in. (mm)	38.62 x 21.12 x 31 (981 x 536 x 787) [3][4][5]	—	—	—
Battery Weight, Max. (16.12 in. Battery Comp.)	lb. (kg)	2,300 (1043)	2,300 (1043)	—	—
Battery Weight, Max. (18.12 in. Battery Comp.)	lb. (kg)	2,600 (1179)	2,600 (1179)	2,600 (1179)	—
Battery Weight, Max. (21.12 in. Battery Comp.)	lb. (kg)	2,900 (1315)	2,900 (1315)	2,900 (1315)	2,900 (1315)
Battery Weight, Min. (16.12 in. Battery Comp.)	lb. (kg)	2,000 (907)	2,000 (907)	—	—
Battery Weight, Min. (18.12 in. Battery Comp.)	lb. (kg)	2,300 (1043)	2,300 (1043)	2,300 (1043)	2,300 (1043)
Battery Weight, Min. (21.12 in. Battery Comp.)	lb. (kg)	2,600 (1179)	2,600 (1179)	2,600 (1179)	2,600 (1179)
<b>Notes:</b>					
[1] Use battery spacers as required to maintain maximum of 0.5 in. gap between battery and wall.					
[2] Additional clearance available, 0.25 in. (6 mm) with minor adjustment.					
[3] 18.12 in. (460 mm) battery compartment size is optional.					
[4] 21.12 in. (536 mm) battery compartment size is optional.					
[5] Height at center to accommodate lifting eye is 31 in. (787 mm), height at corner is 29 in. (737 mm). Battery with cover recommended maximum height is 29 in. (737 mm).					



For International Use Only

# STANDARD EQUIPMENT

36 volt Power Unit  
42 in. Reach Mechanism  
A-Frame Suspension (patented)  
AC-Traction System  
AC Lift System  
Advanced Ergonomic Design  
Auto Position Hold  
Auto Power Off™ Device  
Battery Compartment (16.12, 18.12, or 21.12 in. Usable)  
Bi-Directional  
Bolt-on, Ductile Iron Baselegs  
Brake, Electric  
Console Work Surface & Storage Compartment  
Controls Active Maintenance Diagnostics  
Emergency Power Disconnect  
Energy Efficient Operation  
Floor Pad, Soft Cushioned  
Gauge, Battery State-of-Charge w/Lift Interrupt  
High Speed Lift with Regenerative Lowering  
(Model 7520 only)  
Horn  
Hour Meters: Key Hours, Deadman Activated,  
Time Spent Lifting, Distance Traveled  
Hydraulic Mast Staging  
Inertial Dampener (above 270 in. EH)  
Lift System Relief Valve  
Load Wheels, Floating Articulation, Bolt-on  
Low Step Height  
Maintenance Minder™ Tool  
Mast, Cushioned Stops  
Mast, High Efficiency  
Mast, Large Main Frame Channel  
Mast Lowering Deceleration

Mast Lowering Flow Control  
Mast, Open View  
Mast Speed Variable Lift/Lower  
Mast Staging  
OSHA and ANSI/ITSDF Compliance  
Overhead Guard  
Owner and Operator Manuals  
Parking Brake, Automatic Engaging  
Programmability Performance  
Pivot Bearing, 12.5 in. Diameter/Low Profile  
Polyurethane Drive Tire and Idler  
Power-up and Run Time Diagnostics Real Time  
with Status/Fault Codes  
Proportional Plugging  
Reach/Retract Cushions  
Regenerative Braking  
Scissor Mechanism with Torsion Tube, Thrust,  
and Anti-Friction Rollers/Ball Bearings  
Sideshift, Integral type 2 in., and Power Tilt  
Simultaneous Function Control Handle/Single  
Axis/Relaxed Grip  
Spacious Compartment with Multiple Lean  
Points & Universal Stack Stance and Dockstance  
Steering, Electronic  
Steered Idler  
Straddle Baselegs  
The ACR System™  
UID (User Interface) with Selectable Display  
UL Type "E" Construction  
Warranties, Asset Protection  
Standard Warranty Coverage  
Structural Extended Warranty  
Weight Sensing

---

# AVAILABLE OPTIONS

Audible Alarms  
Battery Gate Interlock  
Cold Storage Conditioning  
Height Indicators  
Keyless On/Off  
Lights

Load Backrest 38" (965 mm), 42" (1067 mm), 48" (1219 mm),  
(36" [914 mm] Std)  
Secondary Control Handle  
ThermaKit™ Cold Storage Comfort Package  
Vantage Point™ Camera System  
iWAREHOUSE Fleet Optimization System

# RUN BETTER. MANAGE SMARTER.

At Raymond, our aim is to deliver the utmost quality and to work for continuous improvement every day, in every aspect of our business. We are proud of what we build. We are proud of the level of service we provide to keep our customers' business up and running. We take pride in our commitment to our customers through our end-to-end approach in helping them find smarter, more efficient, and more effective solutions.

We value the trust that Raymond has earned through decades of proven performance and hands-on innovation. Since the patenting of the first hand-pallet truck to the invention of the reach truck to our pioneering work in narrow aisle operations and beyond, Raymond has led the way in providing customers with the tools and expertise to improve their business.

IF YOU'RE LOOKING FOR A PARTNER WITH THE TOOLS AND EXPERIENCE TO HELP YOU RUN BETTER AND MANAGE SMARTER, LET'S TALK.

PO Box 130  
Greene, NY 13778-0130

Toll free 1-800-235-7200  
Fax 1-607-656-9005

[www.raymondcorp.com](http://www.raymondcorp.com)

Due to continuous product improvements, specifications are subject to change without notice. Some systems and features shown are optional at extra cost. ACR System, Raymond, Reach-Fork, Deep-Reach, Auto Power Off, Maintenance Minder, ThermaKit, Vantage Point and iWAREHOUSE are U.S. trademarks of The Raymond Corporation.

©2016 The Raymond Corporation  
Printed in USA  
1240468A 0616

For International Use Only