

7700 and 7720 DEEP-REACH[®] TRUCK

SPECIFICATION SHEET



For International Use Only

INNOVATION. DESIGN. PERFORMANCE.

The 7000 Series Reach-Fork design starts with an innovative suspension system that creates superior load stability at greater heights while providing operators with a smooth ride. The ACR System™ delivers quick acceleration, smoother directional changes, longer battery shift life and an AC Lift Motor that enables more efficient use of power – lowering overall energy costs. Intuitive ergonomics make them easy to learn to drive, offering clear vision, precise control, and smooth handling for the ultimate in operator comfort and productivity.

Decreased downtime with the utmost reliability and ease of service – and most important – a lower total cost of ownership, makes Raymond Reach-Fork® trucks the bestselling reach trucks in North America. And, we offer the most comprehensive line of customer based Reach-Fork truck solutions in the market – with more than 200 configurations available and Deep-Reach® capacities up to 3,200 pounds.



For International Use Only

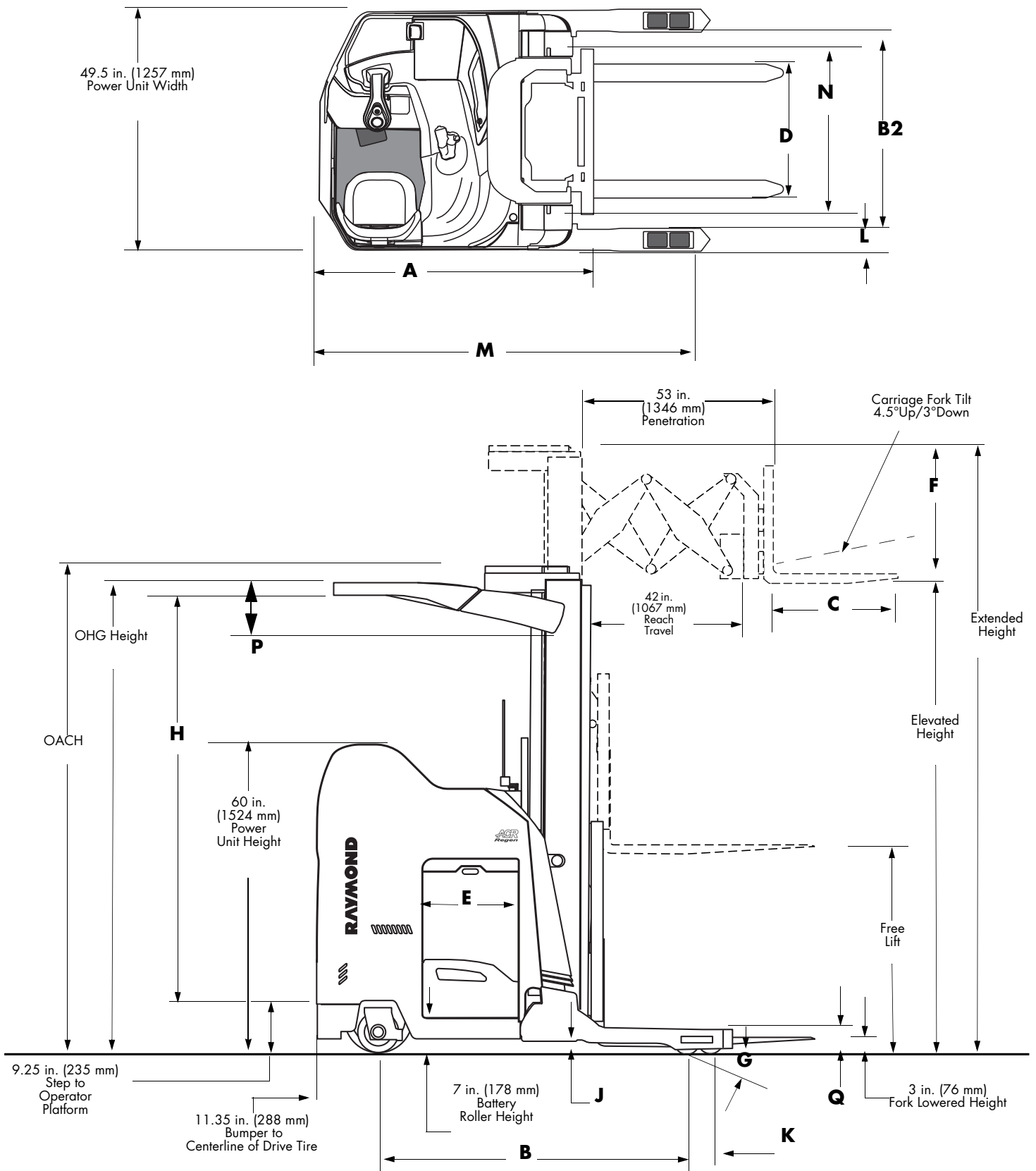
TRUCK SPECIFICATIONS

DIMENSIONS AND GENERAL INFORMATION				
Model			7700-DR32TT with Sideshift (El. Ht. to 372 in.)	7720-DR32TT with Sideshift (El. Ht. to 444 in.) [3][4]
A	Truck Head Length with Sideshift	in. (mm)	66.0 [3] (1676)	68.8 [3] (1697)
B	Truck Wheelbase	in. (mm)	63.6 [3] (1615)	65.1 [3] (1654)
B2	Baseleg Opening (BLO)	in. (mm)	[5]	[5]
C	Forks, ITA Type (Std.) (L x W x T)	in. (mm)	42 x 4 x 1.5 (1067 x 102 x 38)	42 x 4 x 1.5 (1067 x 102 x 38)
C	Forks, Lengths (Opt.)	in. (mm)	30, 36, 48 (762, 914, 1219)	30, 36, 48 (762, 914, 1219)
D	Fork Adjustment	in. (mm)	15 – 30 (381 – 762)	15 – 30 (381 – 762)
E	Battery Compartment Max. Usable Width [2]	in. (mm)	18.12 [3] (460)	18.12 [3] (460)
F	Carriage Height (Without Load Backrest)	in. (mm)	38 (965)	38 (965)
G	Grade Clearance	%	13	10
H	Operator Compartment Height	in. (mm)	OHG height – 11.25 (286)	OHG height – 11.25 (286)
J	Truck Underclearance	in. (mm)	2 (51)	2 (51)
K	CL to CL Load Wheel	in. (mm)	5.25 (133)	5.25 (133)
L	Baseleg Width	in. (mm)	5.25 (133)	5.25 (133)
M	Truck Length	in. (mm)	87.3 [3] (2116)	88.8 [3] (2205)
N	Truck Mast OAW [1]	in. (mm)	31 (787)	35.5 (902)
P	Overhead Guard Thickness	in. (mm)	10.02 (254)	13.18 (335)
Q	Baseleg Height	in. (mm)	5 (127)	5 (127)
Model			7700-DR32TT with Sideshift (El. Ht. to 372 in.)	7720-DR32TT with Sideshift (El. Ht. to 444 in.) [3][4]
	Power Unit		36 Volt, Single Drive	36 Volt, Single Drive
	Max. Cap. @ 24 in. (600 mm) Load Center	lb. (kg)	3,200 (1451)	3,200 (1451)
	Operator Compartment		Sit/Stand-up	Sit/Stand-up
	Drive Tire, Soft Poly (Quantity of 1) Dia. x W	in. (mm)	13.5 x 6 (343 x 152)	13.5 x 6 (343 x 152)
	Steered Idler Tire, Hard Poly (Quantity of 1) Dia. x W	in. (mm)	8 x 4 (203 x 102)	8 x 4 (203 x 102)
	Load Wheels, Hard Poly (Quantity of 4) Dia. x W	in. (mm)	5 x 3.62 (127 x 92)	5 x 3.62 (127 x 92)
	Gradability	%	7	5
	Turning Radius	in. (mm)	82.6 [3][6] (2098)	84.5 [3][4][6] (2146)
	Mast Type		3-stage	3-stage
	Maximum Elevated Mast Height	in. (mm)	372 (9449)	444 (11278)
NOTES:				
[1] Add 3.0 in. (76 mm) at OHG side plates. Be aware of clearance needed between mast OAW and Drive-in Rails.				
[2] Additional clearance available, 0.25 in. (6.4 mm) with minor alteration.				
[3] Add 3 in. (76 mm) for 21.12 in. (536 mm) B.C.				
[4] For lift heights greater than 400 in. (10160 mm): Requires 21.12 in. (536 mm) B.C.				
[5] Available baseleg openings (BLO) are 33, 34, 35, 36, 37, 38, 39, 40, 41, 42, 43, 44, 49, 50, 51, and 52 inches. For Elevated Heights at 331 in. (8407 mm) or greater, 37 in (940 mm) is minimum BLO.				
[6] Sideshift is included in dimensions.				



For International Use Only

DIAGRAM



TRUCK SPECIFICATIONS

MAST SPECIFICATIONS						
Model	OACH [1]	Elevated Height [2][6]	Extended Height [2]	Full Free Lift [3]	OHG Height [3]	Truck Weight without Battery [7]
	in. (mm)	in. (mm)	in. (mm)	in. (mm)	in. (mm)	lb. (kg)
7700-DR32TT (AC Lift, Electronic Power Steering) (18.12 Usable Compartment) [4] (El. Ht. to 330 in.)	89 (2260)	189 (4800)	227 (5766)	50 (1270)	87.4 (2220)	6309 (2862)
	95 (2413)	207 (5258)	245 (6223)	56 (1422)	93.4 (2372)	6470 (2935)
	100 (2540)	216 (5486)	254 (6452)	61 (1549)	93.4 (2372)	6521 (2958)
	107 (2718)	237 (6020)	275 (6985)	68 (1727)	93.4 (2372)	6,693 (3036)
	114 (2896)	252 (6401)	290 (7366)	75 (1905)	93.4 (2372)	6,852 (3108)
	118 (2997)	264 (6706)	302 (7671)	79 (2006)	93.4 (2372)	6,921 (3139)
	122 (3099)	276 (7010)	314 (7976)	83 (2108)	93.4 (2372)	7,024 (3186)
	128 (3251)	288 (7315)	326 (8280)	89 (2260)	93.4 (2372)	7,122 (3230)
	135 (3429)	302 (7671)	340 (8636)	96 (2438)	93.4 (2372)	7,172 (3253)
	141 (3581)	315 (8001)	353 (8966)	102 (2591)	93.4 (2372)	7,378 (3347)
	142 (3607)	321 (8153)	359 (9119)	103 (2616)	93.4 (2372)	7,385 (3350)
	146 (3708)	330 (8382)	368 (9347)	107 (2717)	93.4 (2372)	7,390 (3352)
7700-DR32TT (AC Lift, Electronic Power Steering) (21.12 Usable Compartment) [5] (El. Ht. to 330 in.)	89 (2260)	189 (4800)	227 (5766)	50 (1270)	87.4 (2220)	6309 (2862)
	95 (2413)	207 (5258)	245 (6223)	56 (1422)	93.4 (2372)	6470 (2935)
	100 (2540)	216 (5486)	254 (6452)	61 (1549)	93.4 (2372)	6521 (2958)
	107 (2718)	237 (6020)	275 (6985)	68 (1727)	93.4 (2372)	6,693 (3036)
	114 (2896)	252 (6401)	290 (7366)	75 (1905)	93.4 (2372)	6,852 (3108)
	118 (2997)	264 (6706)	302 (7671)	79 (2006)	93.4 (2372)	6,921 (3139)
	122 (3099)	276 (7010)	314 (7976)	83 (2108)	93.4 (2372)	7,024 (3186)
	128 (3251)	288 (7315)	326 (8280)	89 (2260)	93.4 (2372)	7,122 (3230)
	135 (3429)	302 (7671)	340 (8636)	96 (2438)	93.4 (2372)	7,172 (3253)
	141 (3581)	315 (8001)	353 (8966)	102 (2591)	93.4 (2372)	7,378 (3347)
	142 (3607)	321 (8153)	359 (9119)	103 (2616)	93.4 (2372)	7,385 (3350)
	146 (3708)	330 (8382)	368 (9347)	107 (2717)	93.4 (2372)	7,390 (3352)
7700-DR32TT (AC Lift, Electronic Power Steering) (18.12 Usable Compartment) [4] (El. Ht. 331 in. – 372 in.)	148 (3759)	336 (8534)	374 (9500)	109 (2769)	93.4 (2372)	7,530 (3416)
	152 (3861)	348 (8839)	386 (9804)	113 (2870)	93.4 (2372)	7,646 (3468)
	156 (3962)	360 (9144)	398 (10109)	117 (2972)	93.4 (2372)	7,762 (3520)
	160 (4064)	372 (9449)	410 (10414)	121 (3073)	93.4 (2372)	7,878 (3573)
7700-DR32TT (AC Lift, Electronic Power Steering) (21.12 Usable Compartment) [5] (El. Ht. 331 in. – 372 in.)	148 (3759)	336 (8534)	374 (9500)	105 (2667)	93.4 (2372)	7,530 (3416)
	152 (3861)	348 (8839)	386 (9804)	109 (2769)	93.4 (2372)	7,646 (3468)
	156 (3962)	360 (9144)	398 (10109)	113 (2870)	93.4 (2372)	7,762 (3520)
	160 (4064)	372 (9449)	410 (10414)	117 (2972)	93.4 (2372)	7,878 (3573)
7720-DR32TT (AC Lift, Electronic Power Steering) (18.12 Usable Compartment) [4] (El. Ht. 346 in. – 400 in.)	149 (3784)	346 (8788)	384 (9753)	104 (2641)	93.4 (2372)	8888 (3588)
	157 (3988)	370 (9398)	408 (10363)	112 (2845)	93.4 (2372)	8910 (4042)
	159 (4039)	376 (9550)	414 (10516)	114 (2896)	93.4 (2372)	8930 (4051)
	167 (4242)	400 (10160)	438 (11125)	122 (3099)	93.4 (2372)	8980 (4073)
7720-DR32TT (AC Lift, Electronic Power Steering) (21.12 Usable Compartment) [5] (El. Ht. 346 in. – 440 in.)	149 (3784)	346 (8788)	384 (9753)	104 (2641)	93.4 (2372)	8888 (3588)
	157 (3988)	370 (9398)	408 (10363)	112 (2845)	93.4 (2372)	8910 (4042)
	159 (4039)	376 (9550)	414 (10516)	114 (2896)	93.4 (2372)	8930 (4051)
	167 (4242)	400 (10160)	438 (11125)	122 (3099)	93.4 (2372)	8980 (4073)
	174 (4420)	421 (10693)	459 (11659)	129 (3277)	93.4 (2372)	9030 (4096)
184 (4674)	444 (11278)	482 (12243)	139 (3531)	93.4 (2372)	9100 (4128)	
Notes: [1] Tolerance = +/- 0.75 in. (+/- 19 mm). [2] Tolerance = +2.5/-0.5 in. (+64/-13 mm). [3] Tolerance = +/- 1 in. (+/- 25.4 mm). [4] Usable size is 18.12 in. (460 mm), outside dimension is 18.5 in. (470 mm). [5] Usable size is 21.12 in. (536 mm), outside dimension is 21.5 in. (546 mm).			Notes (Cont'd): [6] Recommended lift-off height is 10 in. (254 mm) higher than top beam height. [7] Shipping weight is 10% greater for crated trucks. Important Information: Full free lifts shown are for basic reach carriage with power tilt. Decrease values when non-standard load backrest or remote station are used.			



For International Use Only

TRUCK SPECIFICATIONS

PERFORMANCE SPECIFICATIONS					
MODEL		7700-DR32TT (El. Ht. to 372 in.)		7720-DR32TT (El. Ht. to 444 in.) [4]	
Battery Compartment	in. (mm)	18.12 or 21.12 (460 or 536)		18.12 or 21.12 (460 or 536)	
Main Controls		Standard	With Regen	With Regen	
Lift Speed Unloaded [1]	fpm (m/s)	150 (0.76)	160 (0.81)	160 (0.81)	
Lift Speed w/Full Load [1]	fpm (m/s)	90 (0.46)	90 (0.46)	110 (0.56)	
Lift Speed w/3,000 lb. Load [1]	fpm (m/s)	95 (0.48)	95 (0.48)	115 (0.58)	
Lift Speed w/2,500 lb. Load [1]	fpm (m/s)	105 (0.53)	105 (0.53)	120 (0.61)	
Lift Speed w/2,000 lb. Load [1]	fpm (m/s)	115 (0.58)	115 (0.58)	130 (0.66)	
Lift Speed w/1,000 lb. Load [1]	fpm (m/s)	135 (0.68)	135 (0.68)	145 (0.74)	
		Unloaded	Loaded	Unloaded	Loaded
Lower Speed [1]	fpm (m/s)	110 (0.56)	110 (0.56)	110 (0.56)	110 (0.56)
Travel Speed [1]	mph (km/h)	8.0 (12.9)	7.5 (12.1)	8.0 (12.9)	7.0 [2][3] (11.2)
Travel Current	amp	140	190	140	190
Auxiliary Controls					
Reach Time	sec	3.5	3.7	3.7	3.7
Tilt Time	sec	1.9	2.2	2.0	2.7
Notes:					
[1] Maximum speed attainable, after break-in period, varies with truck weight, rolling resistance, mast height, options and battery condition.					
[2] 7.5 mph (12.1 km/h) with up to 1500 lb. (680 kg) load.					
[3] With load greater than 1500 lb. (680 kg) in either direction. Model 7720 maximum shown; may be lower based on vehicle weight.					
[4] Above 400 in. (10160 mm) requires 21.12 in. (536 mm) battery compartment.					

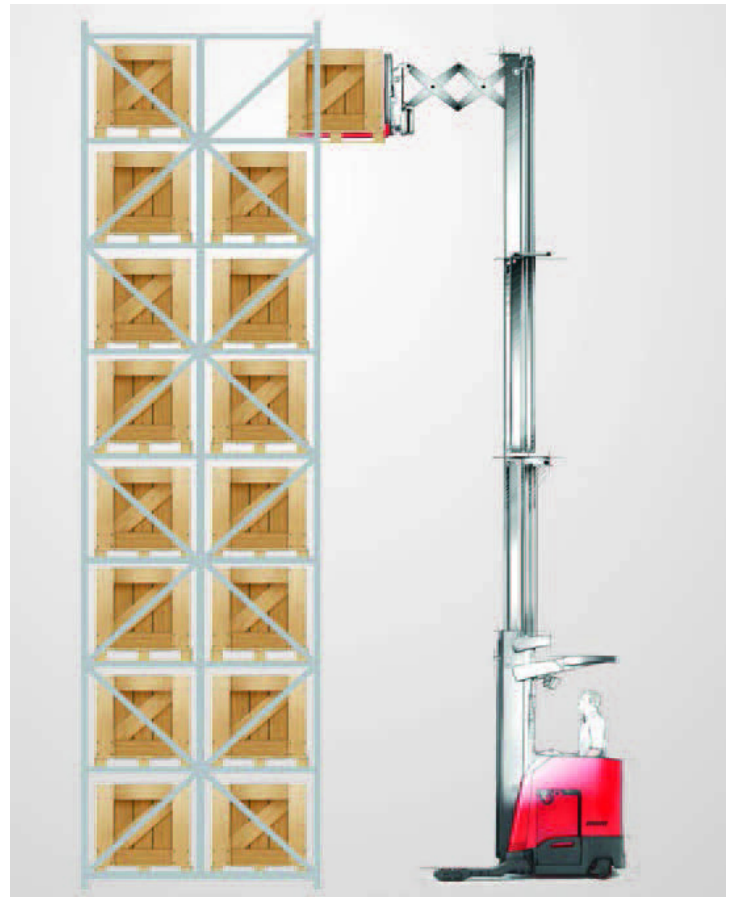


BATTERY SPECIFICATIONS

MODEL		7700-DR32TT (El. Ht. to 372 in.)	7720-DR32TT (El. Ht. to 400 in.)	7720-DR32TT (El. Ht. above 400 in.)
Ampere-hours, Max.		1240	1240	1240
Battery Connector Type		SB-350	SB-350	SB-350
Battery Connector Color		Gray	Gray	Gray
Lead Location		B	B	B
Lead Length	in. (mm)	15 (381)	15 (381)	15 (381)
Max. Usable Comp. Size (L x W x H) [1][2]	in. (mm)	38.62 x 18.12 x 31 [3] (981 x 460 x 787)	38.62 x 18.12 x 31 [3] (981 x 460 x 787)	38.62 x 21.12 x 31 [3] (981 x 536 x 787)
Optional Battery Comp. Max. Usable Comp Size (L x W x H) [1][2]	in. (mm)	38.62 x 21.12 x 31 [3] (981 x 536 x 787)	38.62 x 21.12 x 31 [3] (981 x 536 x 787)	—
Battery Weight, Max. (18.12" Battery Comp.)	lb. (kg)	2,600 (1179)	2,600 (1179)	—
Battery Weight, Max. (21.12" Battery Comp.)	lb. (kg)	2,900 (1315)	2,900 (1315)	2,900 (1315)
Battery Weight, Min. (18.12" Battery Comp.)	lb. (kg)	2,300 (1043)	2,300 (1043)	—
Battery Weight, Min. (21.12" Battery Comp.)	lb. (kg)	2,600 (1179)	2,600 (1179)	2,600 (1179)

Notes:

- [1] Use battery spacers as required to maintain maximum of 0.5 in. gap between battery and wall.
- [2] Additional clearance available, 0.25 in. (6 mm) with minor adjustment.
- [3] Height at center to accommodate lifting eye is 31 in. (787 mm), height at corner is 29 in. (737 mm). Battery with cover recommended maximum height is 29 in. (737 mm).



STANDARD EQUIPMENT

36 volt Power Unit
42 in. Reach Mechanism
A-Frame Suspension (patented)
AC-Traction and Lift System
Advanced Ergonomic Design
Auto Position Hold
Auto Power Off™ Device
Battery Compartment (18.12 in. or 21.12 in. Usable)
Bi-Directional
Bolt-on, Ductile Iron Baselegs
Brake, Electric
Controls Active Maintenance Diagnostics
Console Work Surface & Storage Compartment
Emergency Power Disconnect
Energy Efficient Operation
Ergonomic Seat with Adjustable Height and Moves
Out of the Way for Standing Position
Floor Pad, Soft Cushioned
High Speed Lift with Regenerative Lowering (Model 7720 only)
Horn
Hour Meters: Key Hours, Deadman Activated, Time Spent Lifting, Distance Traveled
Hydraulic Mast Staging
Inertial Dampener (trucks above 270")
Lift System Relief Valve
Load Wheels, Floating Articulation, Bolt-on
Low Step Height
Maintenance Minder™ Tool
Mast, Cushioned Stops
Mast, High Efficiency
Mast, Large Main Frame Channel
Mast Lowering Deceleration
Mast Lowering Flow Control
Mast, Open View
Mast Speed Variable Lift/Lower
Mast Staging
OSHA and ANSI/ITSDF Compliance
Overhead Guard
Owner and Operator Manuals
Parking Brake, Automatic Engaging
Programmability Performance
Pivot Bearing, 12.5 in. Diameter/Low Profile
Polyurethane Drive Tire and Idler
Power-up and Run Time Diagnostics Real Time with Status/Fault Codes
Proportional Plugging
Reach/Retract Cushions
Regenerative Braking
Scissor Mechanism with Torsion Tube, Thrust, and Anti-Friction Rollers/Ball Bearings
Sideshift, Integral type 2 in., and Power Tilt
Simultaneous Function Control Handle/Single Axis/Relaxed Grip
Spacious Compartment with Multiple Lean Points & Universal Stack Stance and Dockstance
Steered Idler
Steering Column Adjustable (3 Position)
Steering, Electric
Straddle Baselegs
The ACR System™
UID (User Interface) with Selectable Display
UL Type "E" Construction
Warranties, Asset Protection
Weight Sensing

AVAILABLE OPTIONS

Audible Alarms
Battery Gate Interlock
Cold Storage Conditioning
Heated Seat
Height Indicators
Keyless On/Off
Lights
Load Backrest 38" (965 mm), 42" (1067 mm), 48" (1219 mm), Standard Backrest is 36" (914 mm)
ThermaKit™ Cold Storage Comfort Package
Vantage Point™ Camera System
iWAREHOUSE Fleet Optimization System



For International Use Only

RUN BETTER. MANAGE SMARTER.

At Raymond, our aim is to deliver the utmost quality and to work for continuous improvement every day, in every aspect of our business. We are proud of what we build. We are proud of the level of service we provide to keep our customers' business up and running. We take pride in our commitment to our customers through our end-to-end approach in helping them find smarter, more efficient, and more effective solutions.

We value the trust that Raymond has earned through decades of proven performance and hands-on innovation. Since the patenting of the first hand-pallet truck to the invention of the reach truck to our pioneering work in narrow aisle operations and beyond, Raymond has led the way in providing customers with the tools and expertise to improve their business.

IF YOU'RE LOOKING FOR A PARTNER WITH THE TOOLS AND EXPERIENCE TO HELP YOU RUN BETTER AND MANAGE SMARTER, LET'S TALK.

PO Box 130
Greene, NY 13778-0130

Toll free 1-800-235-7200
Fax 1-607-656-9005

www.raymondcorp.com

Due to continuous product improvements, specifications are subject to change without notice. Some systems and features shown are optional at extra cost. ACR System, Raymond, Reach-Fork, Deep-Reach, Auto Power Off, Maintenance Minder, ThermaKit, Vantage Point and iWAREHOUSE are U.S. trademarks of The Raymond Corporation.

©2016 The Raymond Corporation
Printed in USA
1240470A 0616

For International Use Only

RAYMOND